



leadarmachinery

www.leadarmachinery.com

# Laizhou Lida Machinery Co., Ltd.

Laizhou Lida Machinery Co., Ltd. established in 2002, is a manufacturer of construction machinery with advanced and innovative technology. We have exported more than 100 countries like USA, Mexico, Canada, Spain, Russia, Singapore, Thailand, India etc. Lida products play an important role in speeding up the project progress, ensuring the project quality, improving the working conditions, improving the working efficiency and reducing the project cost.





### COLOR

If the regular color can not meet your needs, we can customize the color for you.



### ENGINE

You can choose a variety of engines, you can choose Euro 3, Euro 5 and EPA engine.



### LOGO

We can design and customize forklift of your own brands



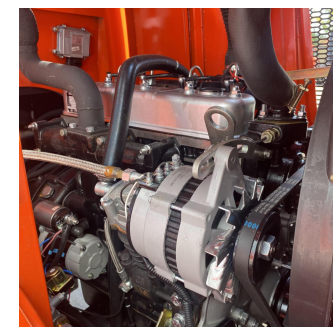
### OTHER

We can produce what you want according to your requirements

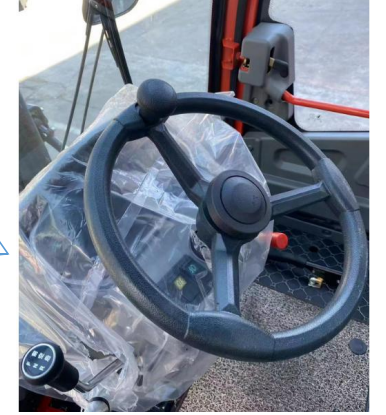
Our four-wheel drive forklifts are equipped with specially developed gearboxes and axles. They have great torque and excellent ability to get out of trouble. These advantages are unique in China. So please trust the strength of our factory and place your order with confidence.



**LUXURIOUS DRIVING INTERIOR**



**BRAND ENGINE**



**SMALL STEERING WHEEL**



**HIGH QUALITY TIRES**



**LARGER AND WIDER TRAILER HOOK**



**ANTICORROSION SPRAY PIPE**

## 2 ton 4WD off road forklift standard



Rated lift weight	2000kg
Power Source	Diesel
Lifting Height	3M
Overall Dimensions	3400*1450*2240mm
Gear	265 High-Low Speed
Engine model	490
Fork length	1220mm
Engine power	40KW
Tire	825-16
Braking method	oil brake
operating lever	Single lever control
Mast	2-stage-mast
Drive type	4 wheel drive
Gradeability	≤40°
Net weight	2350KG
Cab	Enclosed luxury cab

## 3 ton 4WD off road forklift standard



Rated lift weight	3000kg
Power Source	Diesel
Lifting Height	3M
Overall Dimensions	4200*1800*2250mm
Gear	265 Double High-Low Speed
Engine model	490
Fork length	1220mm
Engine power	40KW
Tire	20.5/70-16
Braking method	oil brake
Counterweight	Enlarge and thicken the counterweight
operating lever	Single lever control
Mast	2-stage-mast
Drive type	4 wheel drive
Gradeability	≤40°
Net weight	3800KG
Cab	Enclosed luxury cab

## 3.5 ton 4WD off road forklift standard



Rated lift weight	3500kg
Power Source	Diesel
Lifting Height	3M
Overall Dimensions	4200*1800*2250mm
Gear	265 Double High-Low Speed
Engine model	490
Fork length	1220mm
Engine power	40KW
Tire	20.5/70-16
Braking method	air brake
axle	Wheel edge cast steel bridge
Counterweight	Enlarge and thicken the counterweight
operating lever	Single lever control
Mast	2-stage-mast
Drive type	4 wheel drive
Gradeability	≤40°
Net weight	3800KG
Cab	Enclosed luxury cab

# 4 ton 4WD off road forklift standard



Rated lift weight	4000kg
Power Source	Diesel
Lifting Height	3M
Overall Dimensions	4200*1800*2250mm
Gear	265 Double High-Low Speed
Engine model	4102
Fork length	1220mm
Engine power	74KW
Tire	20.5/70-16 solid tire
Braking method	air brake
axle	Wheel edge cast steel bridge
Counterweight	Enlarge and thicken the counterweight
operating lever	Single lever control
Mast	2-stage-mast
Drive type	4 wheel drive
Gradeability	≤40°
Net weight	4000KG
Cab	Enclosed luxury cab

# 5 ton 4WD off road forklift standard



Rated lift weight	5000kg
Power Source	Diesel
Lifting Height	3M
Overall Dimensions	4500*2000*2400mm
Gear	265 Double High-Low Speed
Engine model	4102
Fork length	1220mm
Engine power	74KW
Tire	16/70-20
Braking method	air brake
axle	Wheel edge cast steel bridge
Counterweight	Enlarge and thicken the counterweight
operating lever	Single lever control
Mast	2-stage-mast
Drive type	4 wheel drive
Gradeability	≤40°
Net weight	5000KG
Cab	Enclosed luxury cab



# 6 ton 4WD off road forklift standard



Rated lift weight	6000kg
Power Source	Diesel
Lifting Height	3M
Overall Dimensions	4500*2300*2400mm
Gear	265 Double High-Low Speed
Engine model	4102
Fork length	1220mm
Engine power	76KW
Tire	12R22.5,Steel tire
Braking method	air brake
axle	Wheel edge cast steel bridge
Counterweight	Enlarge and thicken the counterweight
operating lever	Single lever control
Mast	2-stage-mast
Drive type	4 wheel drive
Gradeability	≤40°
Net weight	6500KG
Cab	Enclosed luxury cab

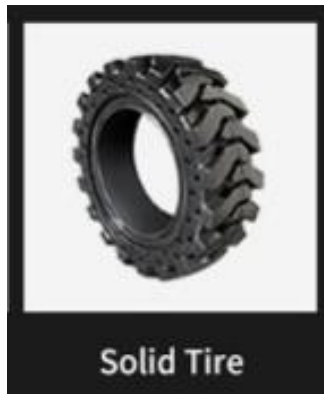
# Optional convertible cab



# Optional tire pattern

High quality engineering  
pneumatic tires come standard

Solid and semi-solid tires  
Optional



# optional



Adjustable Distance



Down Tilt Fork



Barrel Clamp



Cylinder Clamp



Soft Clamp



Steel Tube Clamp



Triple Gantry



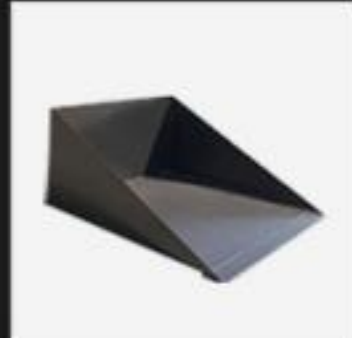
Ejector



Log Grappler



Air Conditioner



Flat Bucket



Multifunction Bucket



Fork Arm



Side Shifter